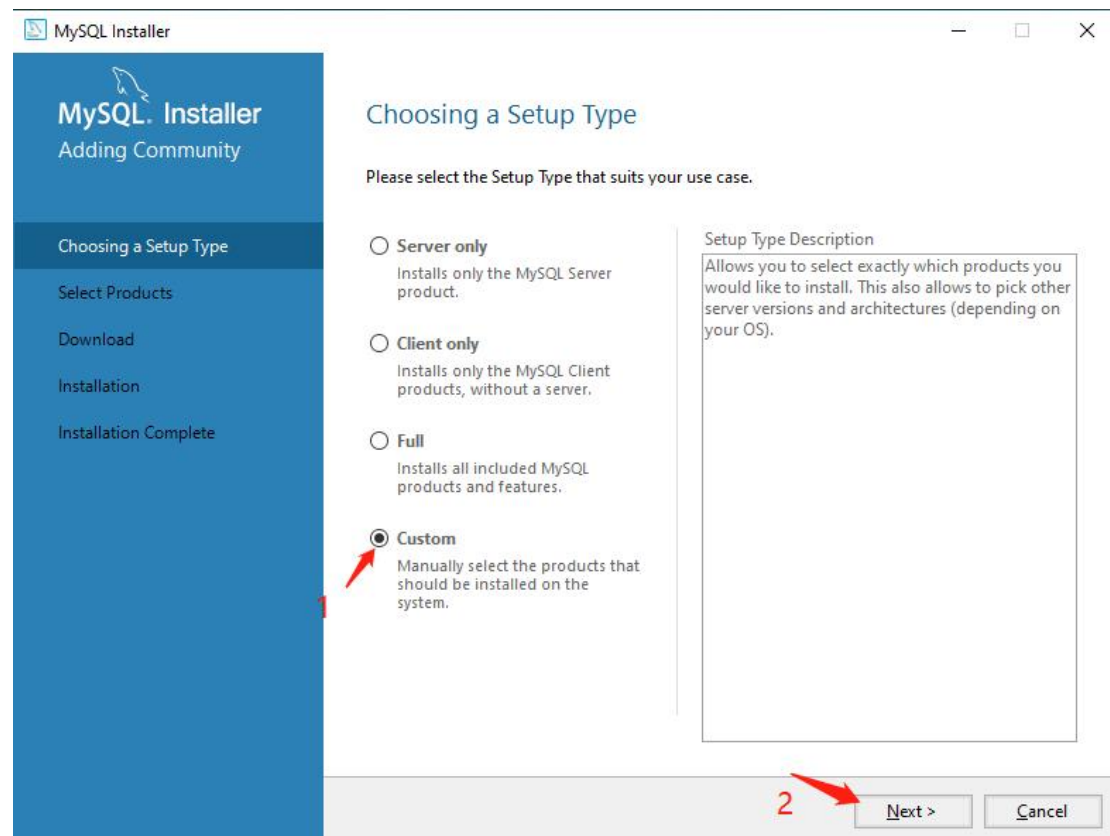
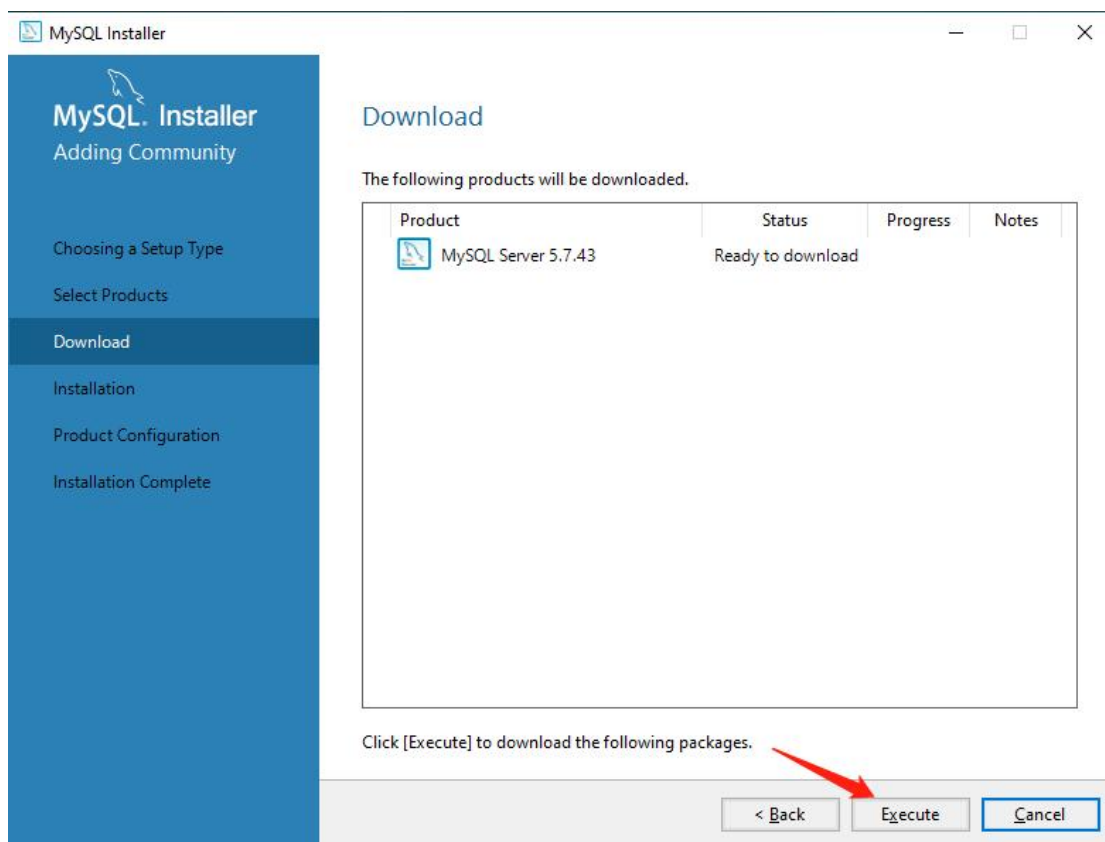
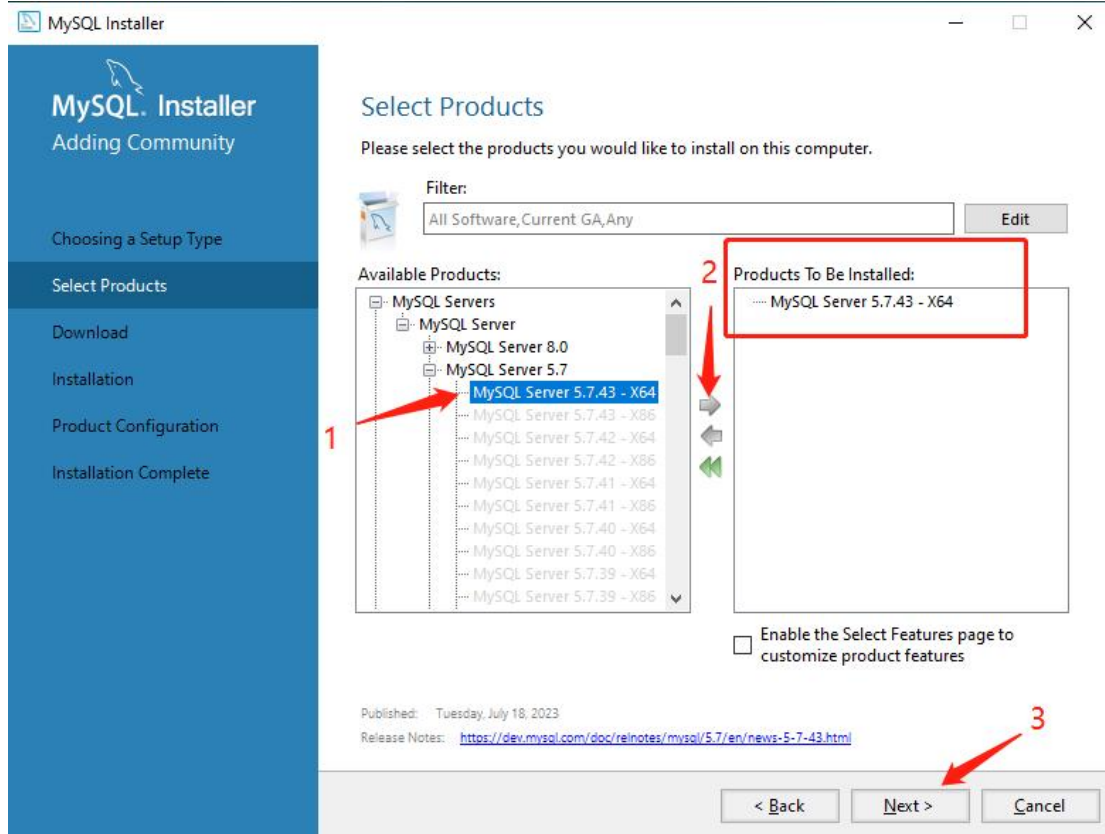
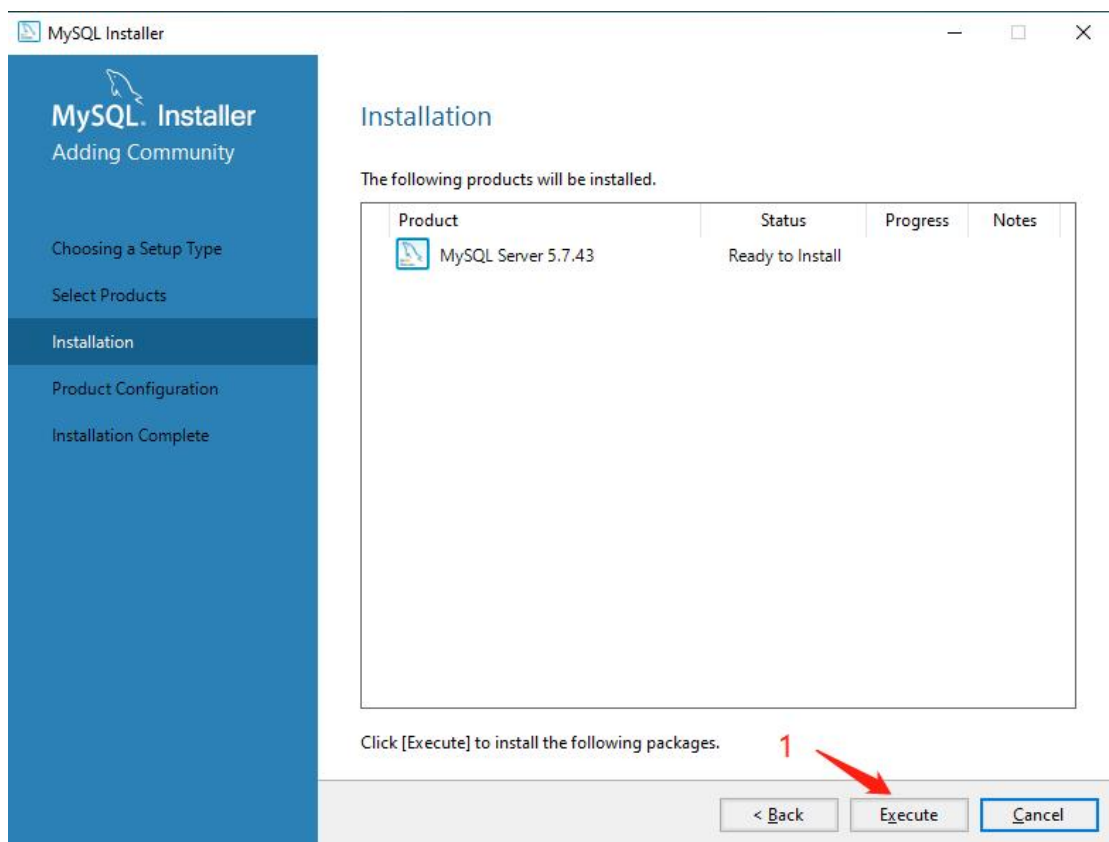
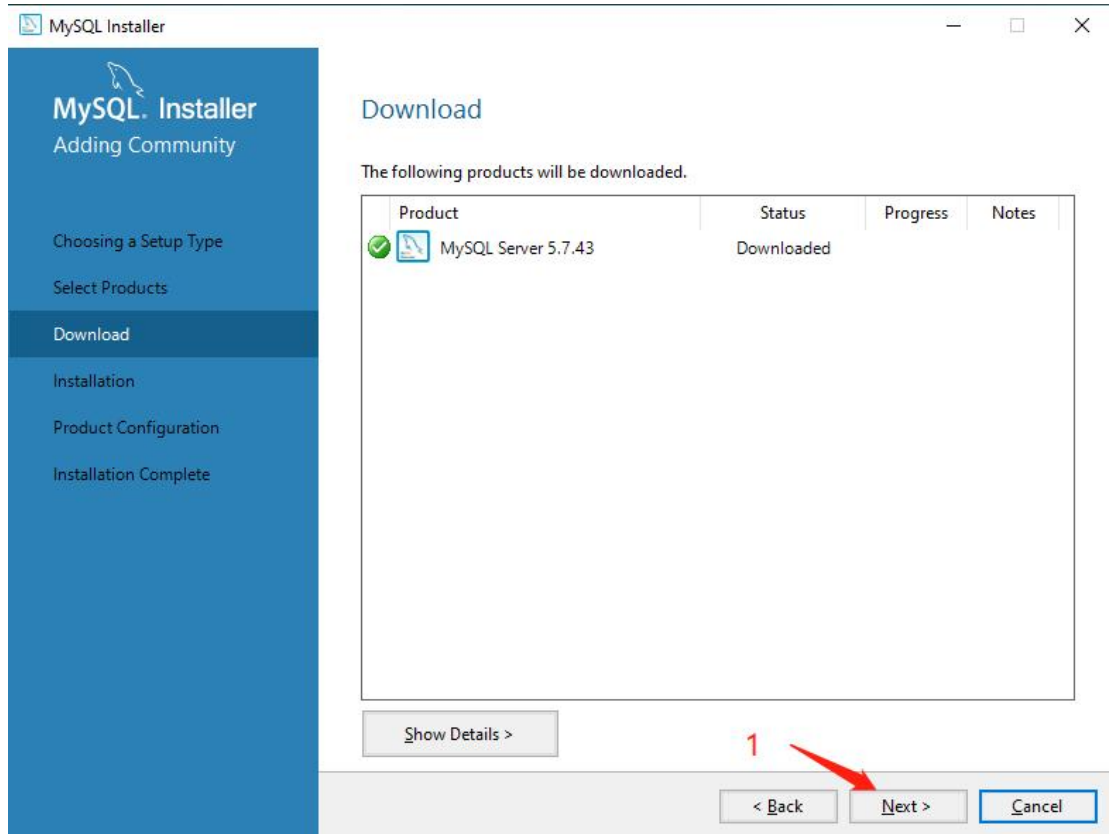
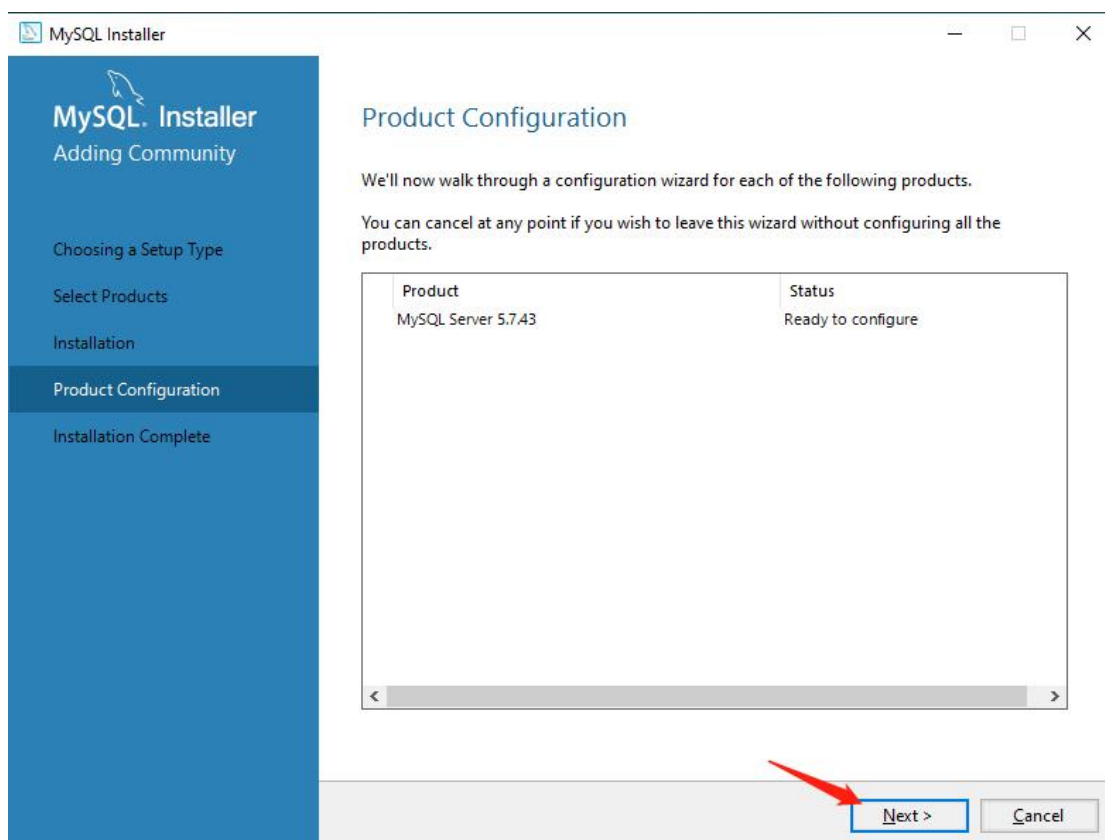
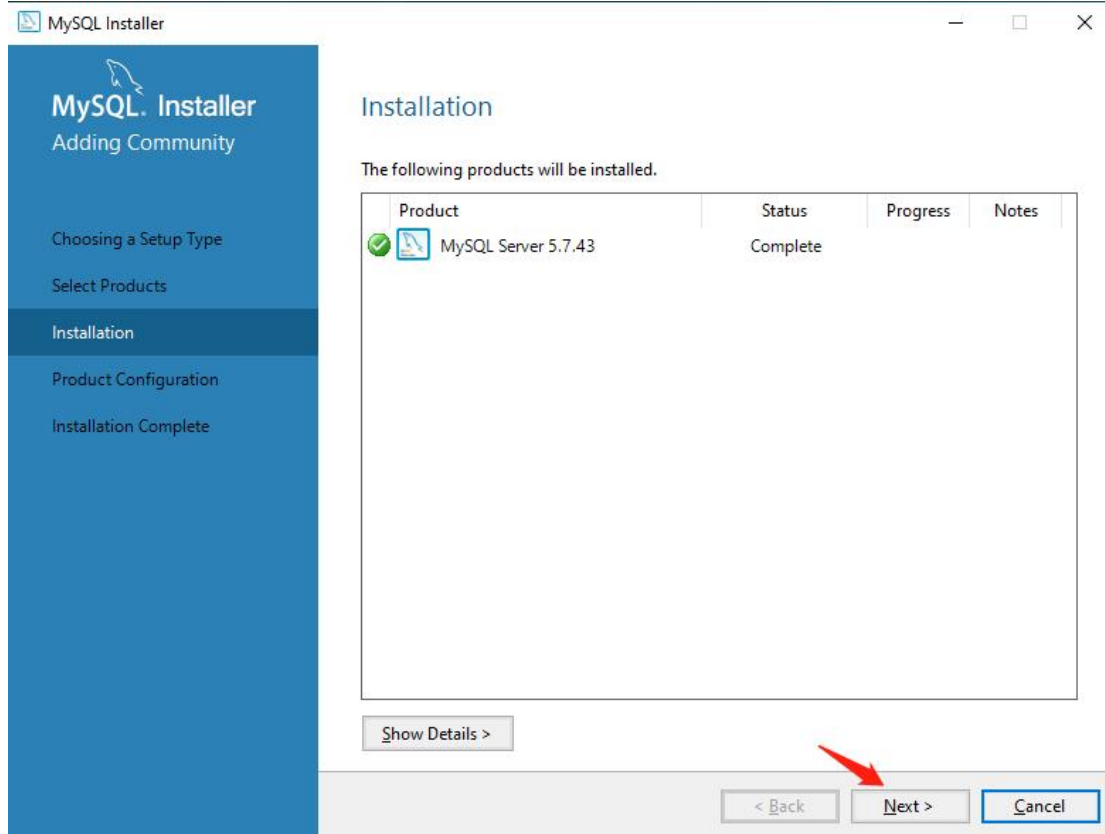


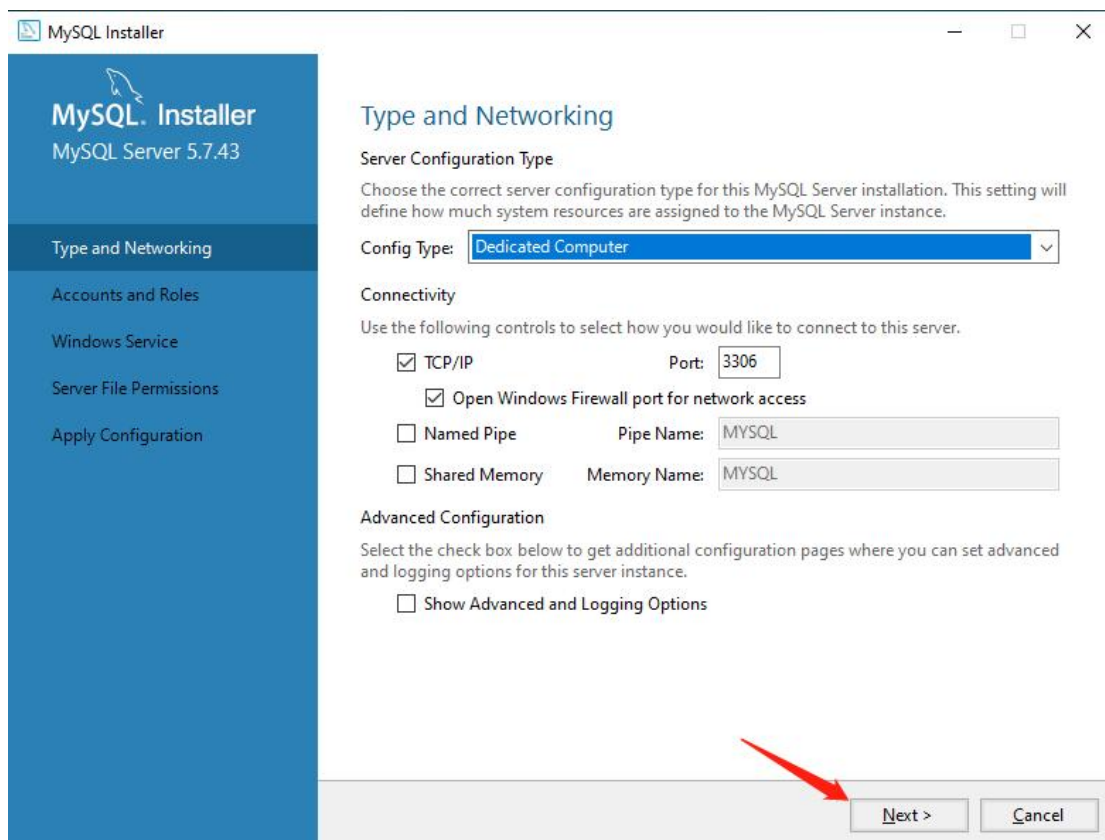
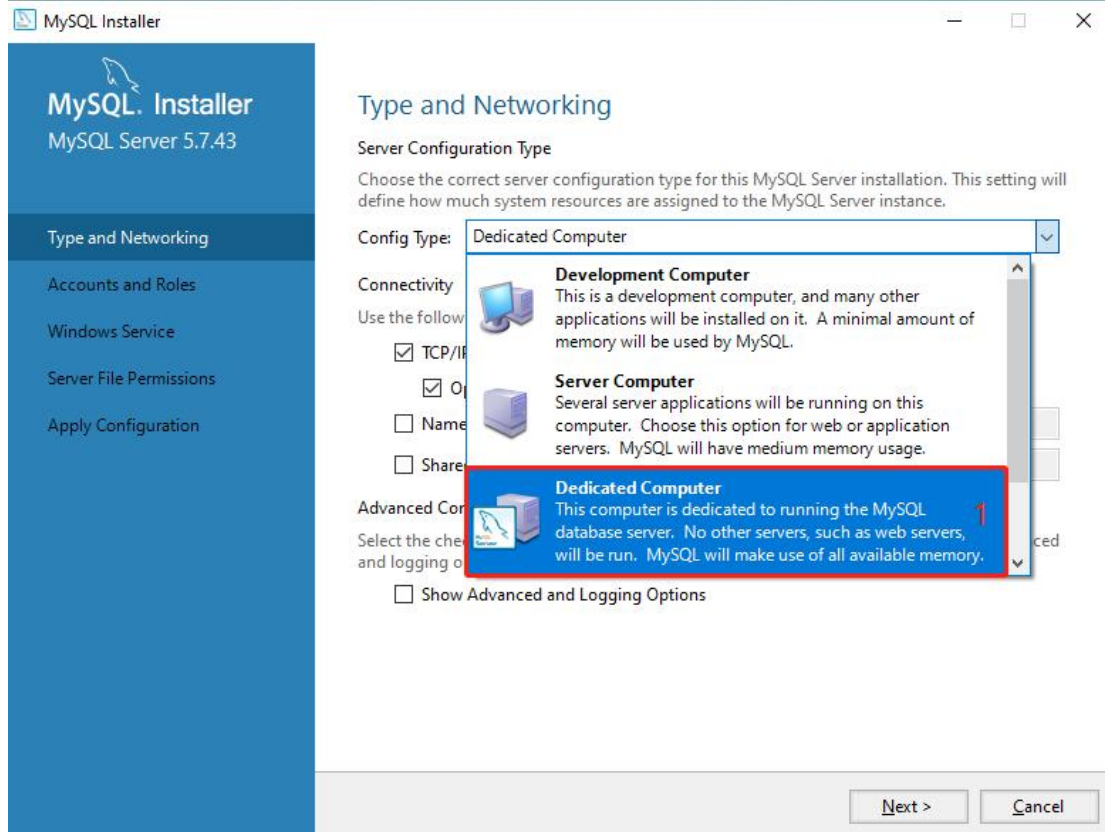
The prerequisite for running Flash Matrix is to have MySQL deployed locally. Let us provide you with a step-by-step guide on deploying the database











MySQL Installer

MySQL Server 5.7.43

Type and Networking

Accounts and Roles

Windows Service

Server File Permissions

Apply Configuration

## Accounts and Roles

**Root Account Password**  
Enter the password for the root account. Please remember to store this password in a secure place.

MySQL Root Password:

Repeat Password:

Password strength: **Weak**

**password: 123456**

**MySQL User Accounts**  
Create MySQL user accounts for your users and applications. Assign a role to the user that consists of a set of privileges.

MySQL User Name	Host	User Role
-----------------	------	-----------

Add User

Edit User

Delete

< Back

Next >

Cancel

MySQL Installer

MySQL Server 5.7.43

Type and Networking

Accounts and Roles

Windows Service

Server File Permissions

Apply Configuration

## Windows Service

☒ Configure MySQL Server as a Windows Service

**Windows Service Details**  
Please specify a Windows Service name to be used for this MySQL Server instance. A unique name is required for each instance.

Windows Service Name:

☒ Start the MySQL Server at System Startup

**Run Windows Service as ...**  
The MySQL Server needs to run under a given user account. Based on the security requirements of your system you need to pick one of the options below.

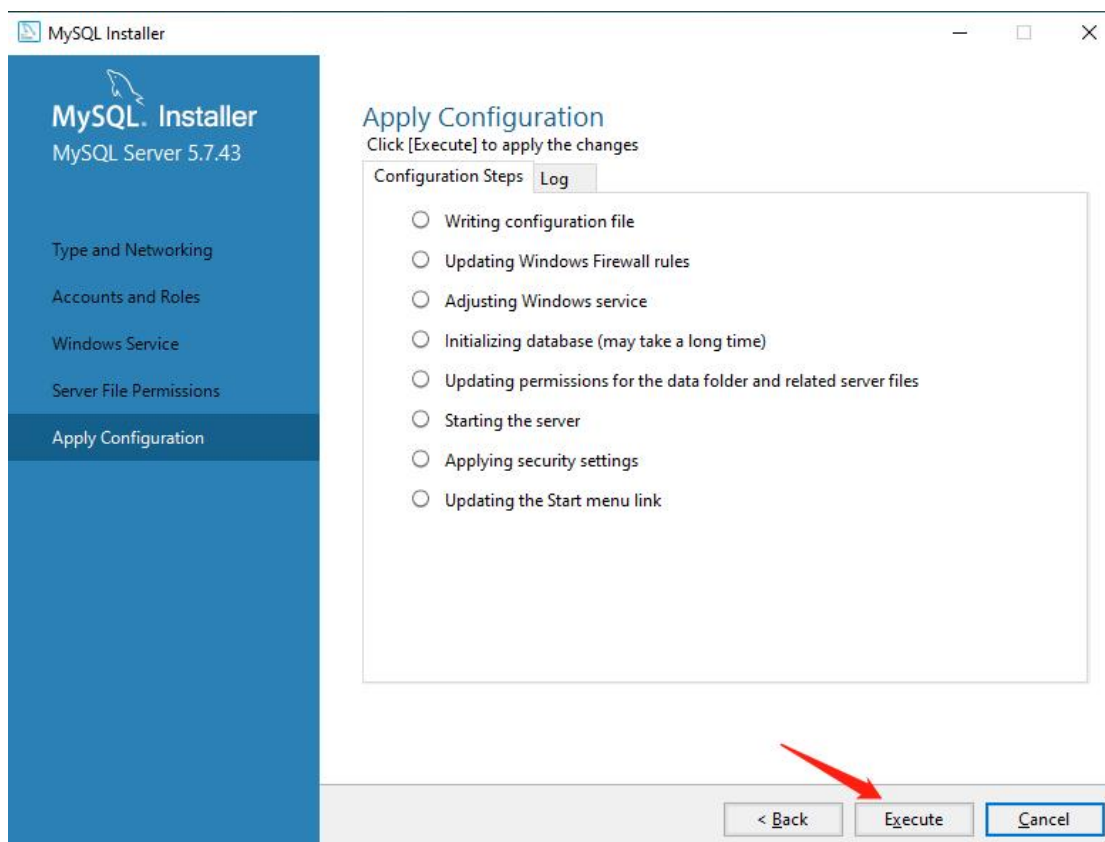
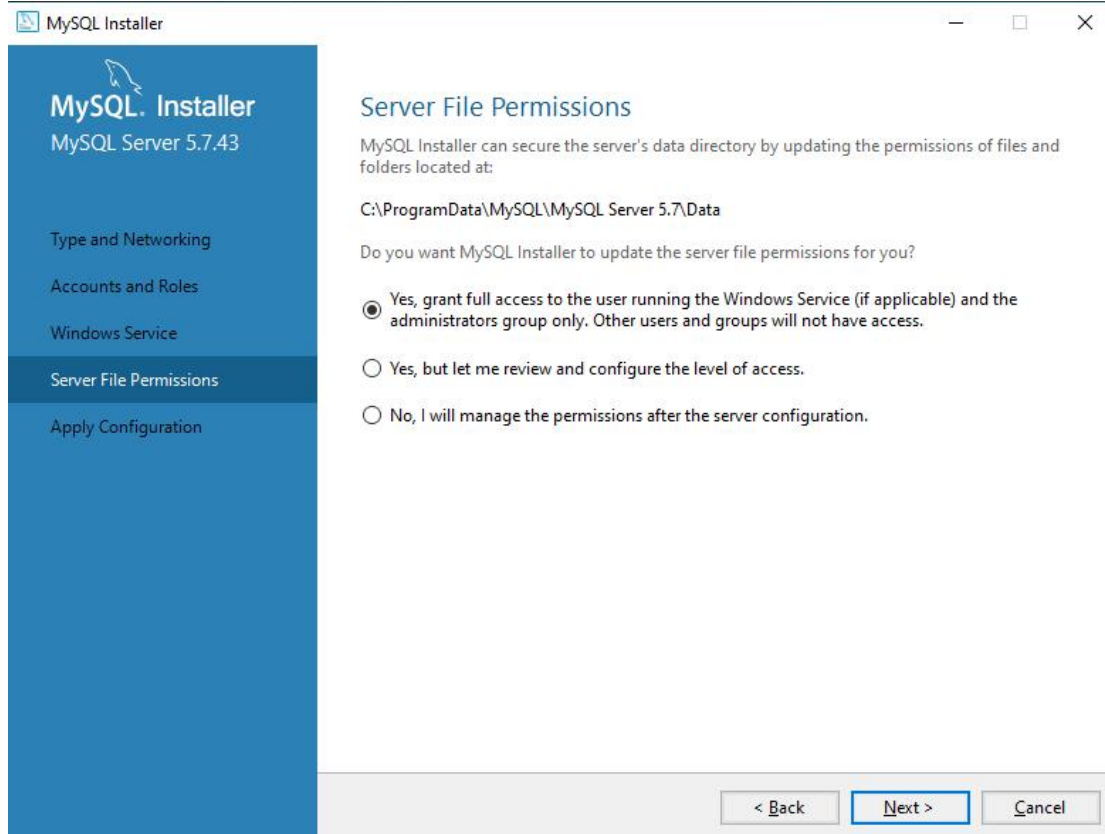
☒ **Standard System Account**  
Recommended for most scenarios.

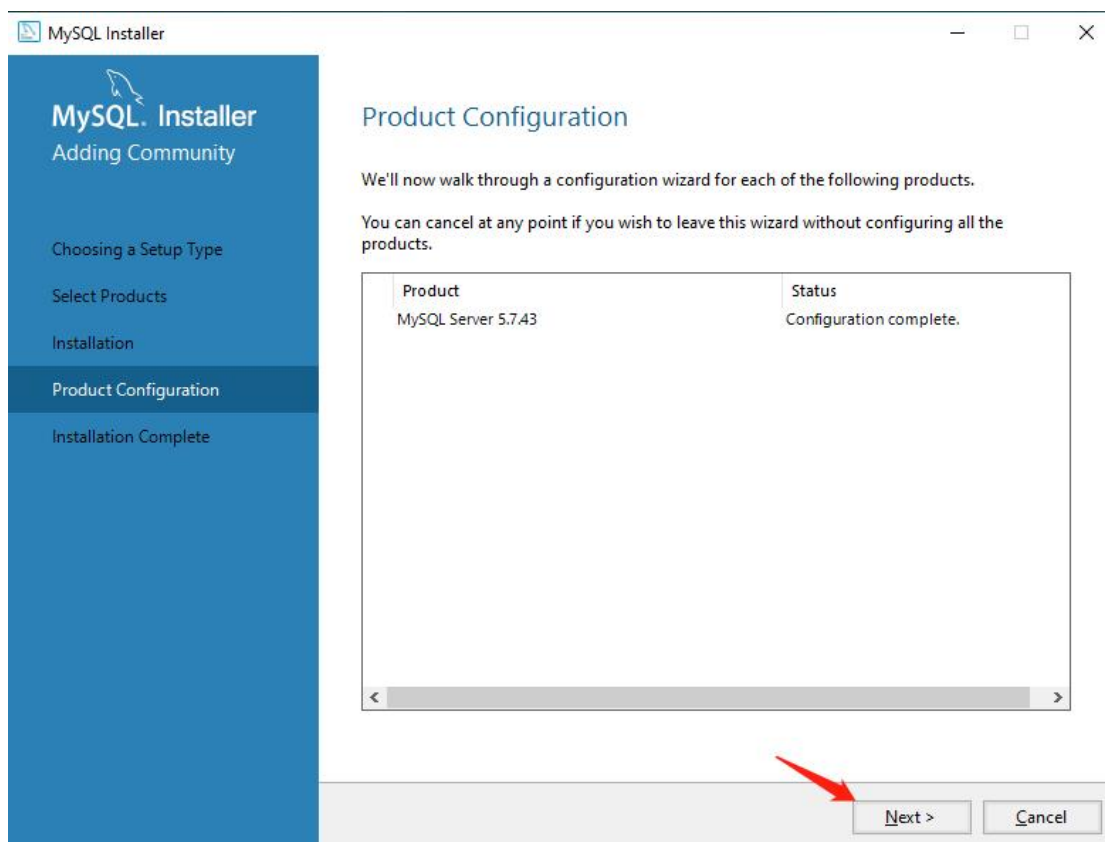
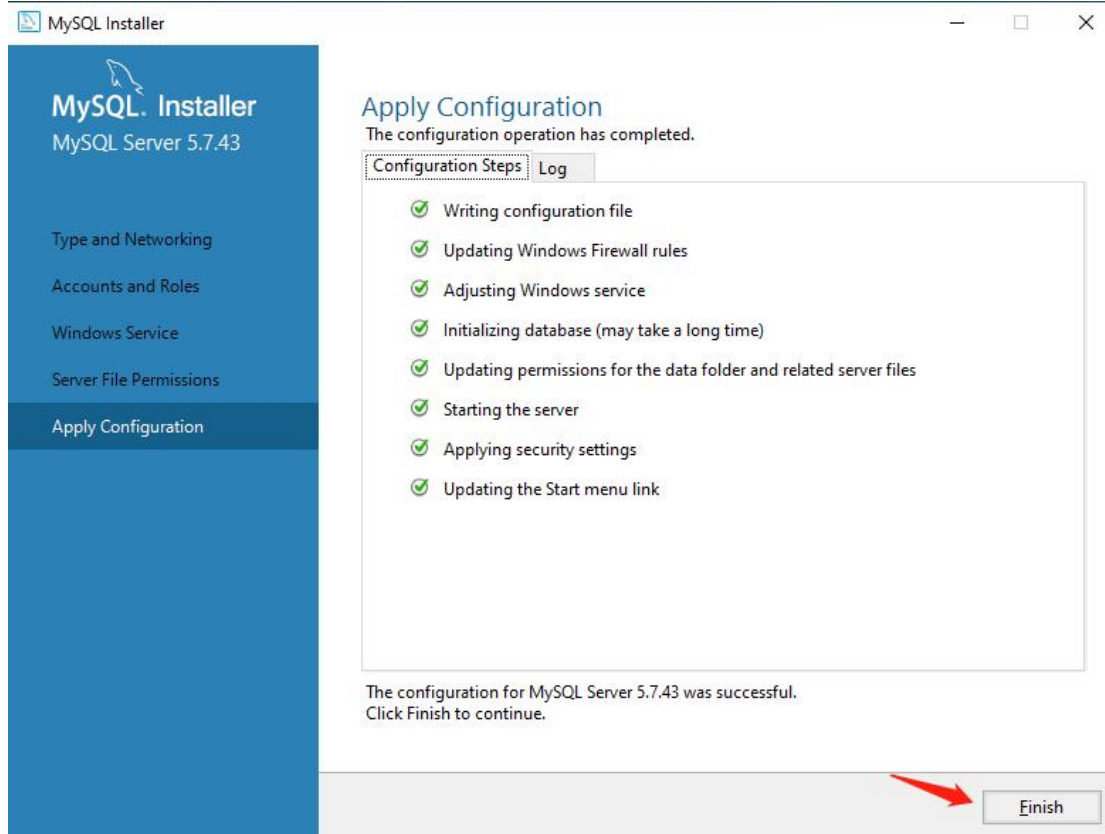
☐ **Custom User**  
An existing user account can be selected for advanced scenarios.

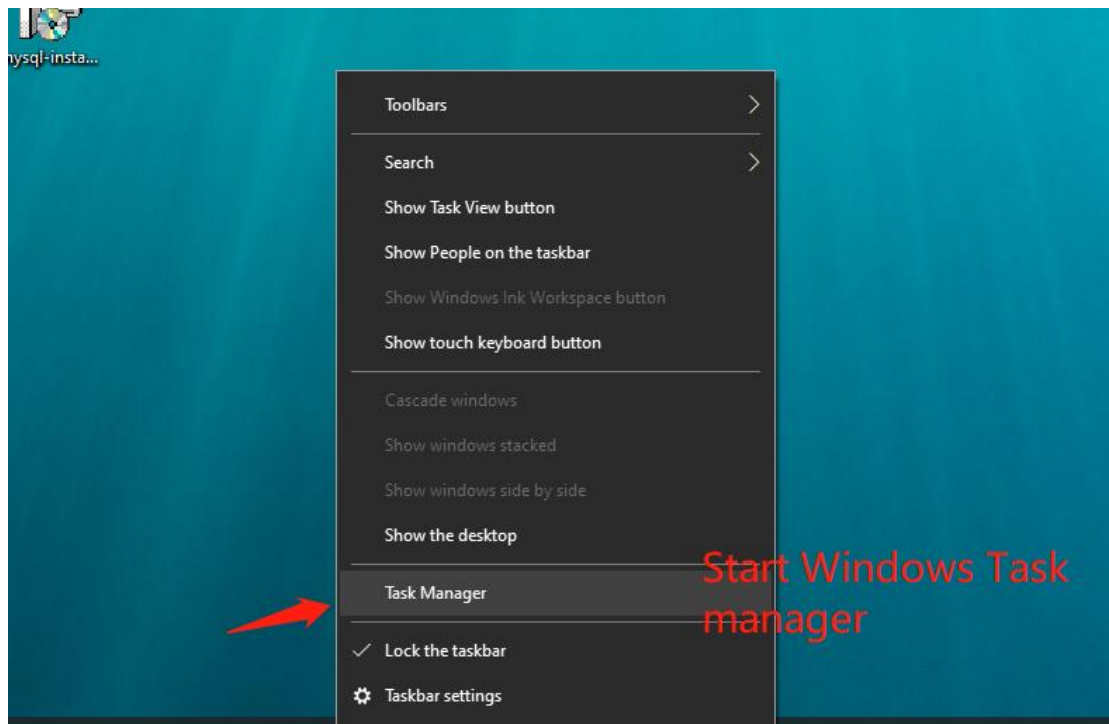
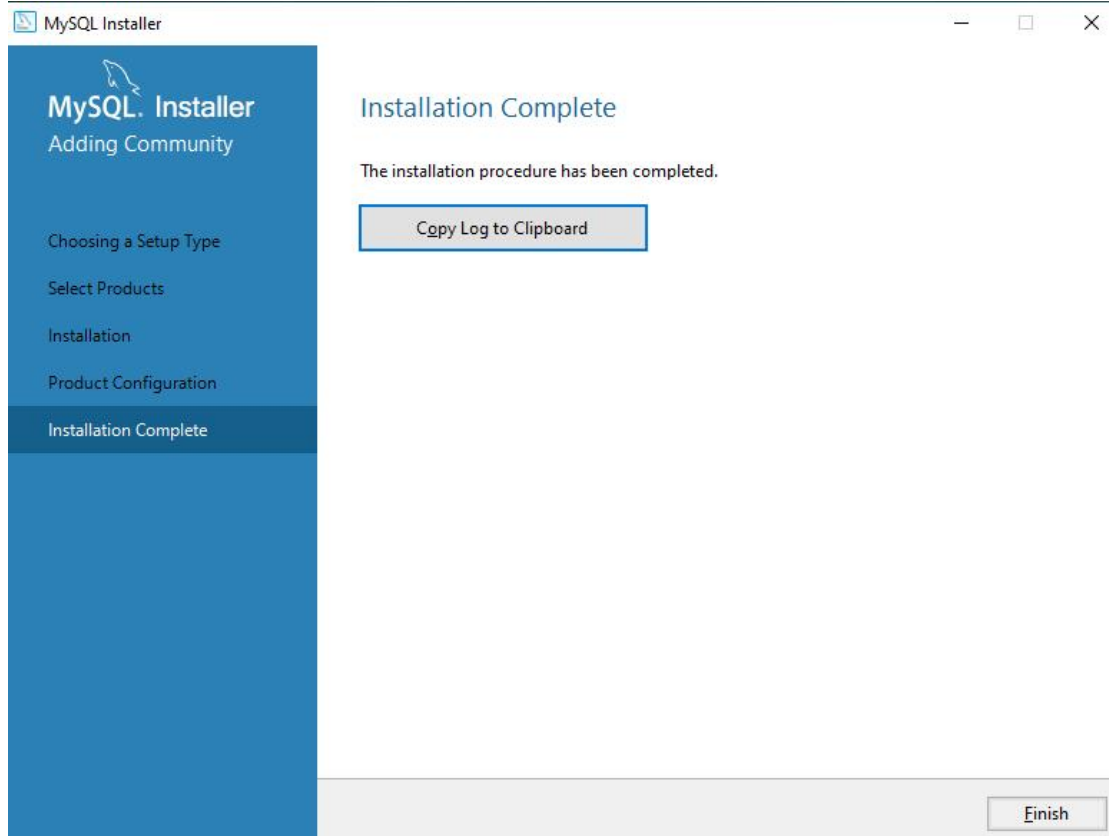
< Back

Next >

Cancel







Task Manager

File Options View

Processes Performance App history Startup Users Details **Services**

Name	PID	Description	Status	Group
LicenseManager		Windows License Manager Se...	Stopped	LocalSe
ltdsvc		Link-Layer Topology Discover...	Stopped	LocalSe
lmhosts	1604	TCP/IP NetBIOS Helper	Running	LocalSe
LMS	6720	Intel(R) Management and Sec...	Running	
LSM	1412	Local Session Manager	Running	DcomL
LxpSvc		Language Experience Service	Stopped	netsvcs
MapsBroker		Downloaded Maps Manager	Stopped	Networ
MessagingService		MessagingService	Stopped	Unistac
MessagingService_6dfa5		MessagingService_6dfa5	Stopped	Unistac
MicrosoftEdgeElevationService		Microsoft Edge Elevation Serv...	Stopped	
mpssvc	4304	Windows Defender Firewall	Running	LocalSe
MSDTC		Distributed Transaction Coor...	Stopped	
MSISCSI		Microsoft iSCSI Initiator Service	Stopped	netsvcs
msiserver		Windows Installer	Stopped	
MsKeyboardFilter		Microsoft Keyboard Filter	Stopped	netsvcs
MySQL57	16296	MySQL 57	Running	
NaturalAuthentication		Authentication	Stopped	netsvcs
NcaSvc		Connectivity Assistant	Stopped	NetSvc
NcbService		Connection Broker	Running	LocalSy
NcdAutoSetup		Connected Devices ...	Stopped	LocalSe
Netlogon			Stopped	
Netman		Connections	Stopped	LocalSy
netprofm		Service	Running	LocalSe
NetSetupSvc		Network Setup Service	Stopped	netsvcs
NetTcpPortSharing		Net.Tcp Port Sharing Service	Stopped	
NgcCtnrSvc		Microsoft Passport Container	Stopped	LocalSe
NgcSvc		Microsoft Passport	Stopped	LocalSy
NlaSvc	2112	Network Location Awareness	Running	Networ
nsi	2020	Network Store Interface Service	Running	LocalSe

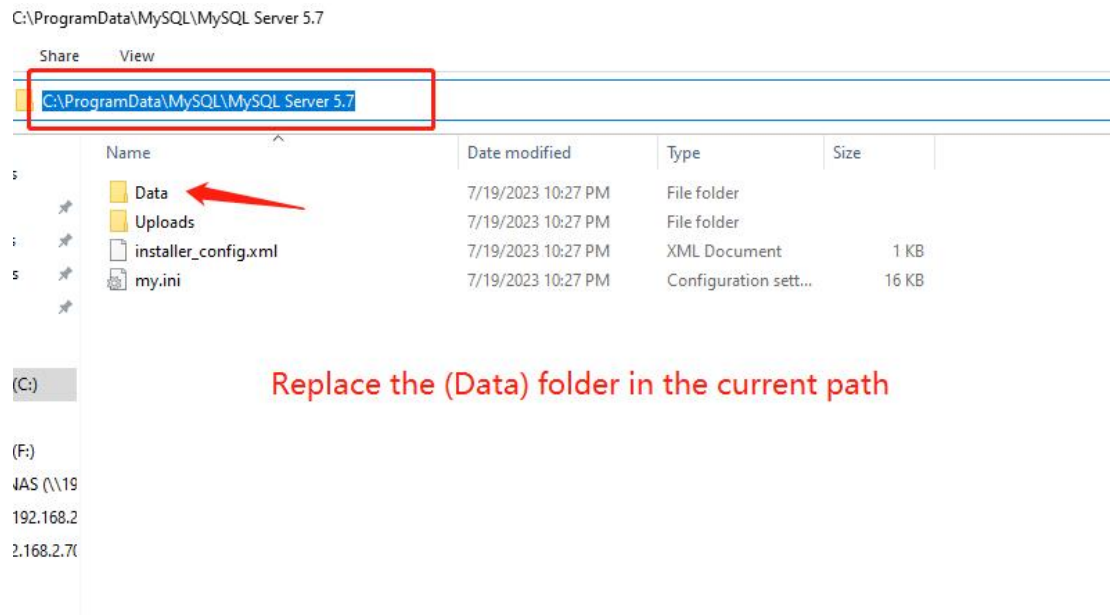
Start  
**Stop**  
 Restart  
 Open Services  
 Search online  
 Go to details

The service must be stopped before importing or deleting the database  
 After importing the database, the service must be started

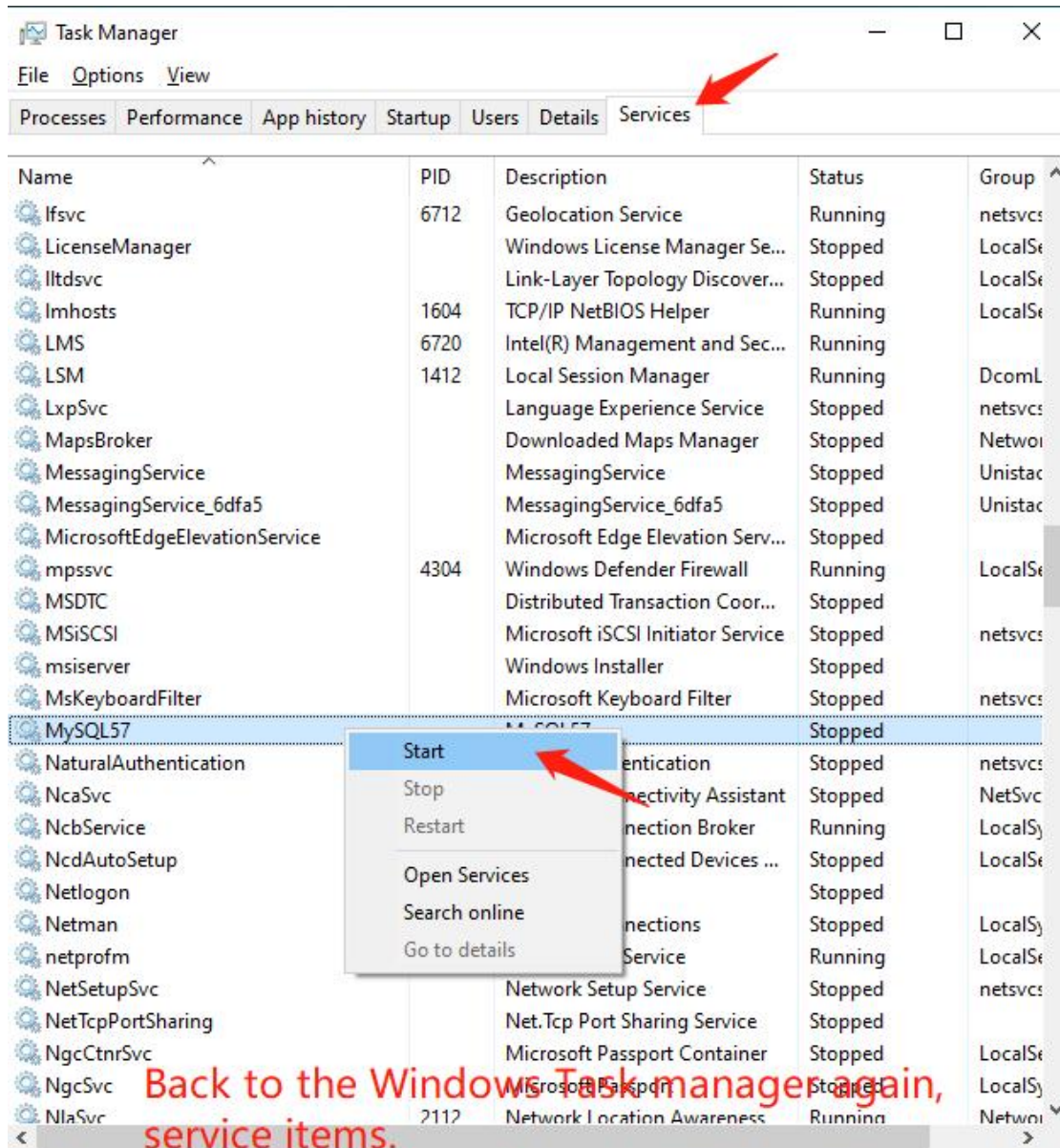
Fewer details | Open Services

If you haven't made any changes to the installation path in the previous steps, the default path is as follows:

C:\ProgramData\MySQL\MySQL Server 5.7

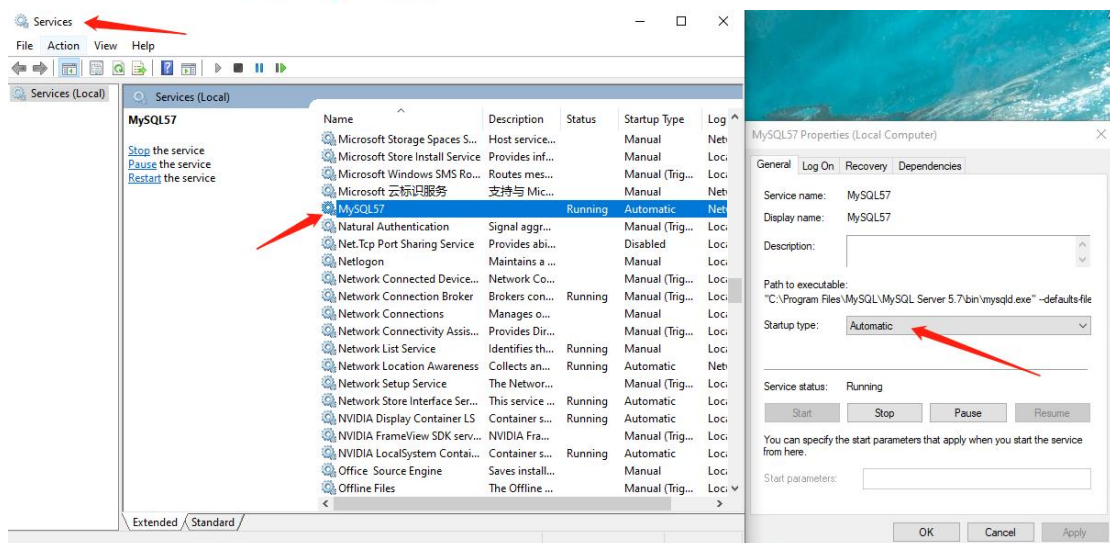


Please ensure that every time you delete or replace the database's DATA folder, you need to stop the MySQL57 service. After the replacement is completed, remember to restart the MySQL57 service again



Back to the Windows Task manager again, service items.

Enable MySQL service



Up to this point, the database installation is completed. Next, you need to insert the USB key and start the software for it to function properly. If the software displays the following error message, it indicates that the database is not installed, not deployed successfully, or not enabled.

